



Townley Park

KNL23TOW1 AO • 7.20.2023





Townley Park

KNL23TOW1 AO • 7.20.2023





Townley Park

KNL23TOW1 AO • 7.20.2023



© 2023 Landscape Structures. All Rights Reserved



LS
landscape
structures™

Townley Park

KNL23TOW1 AO • 7.20.2023

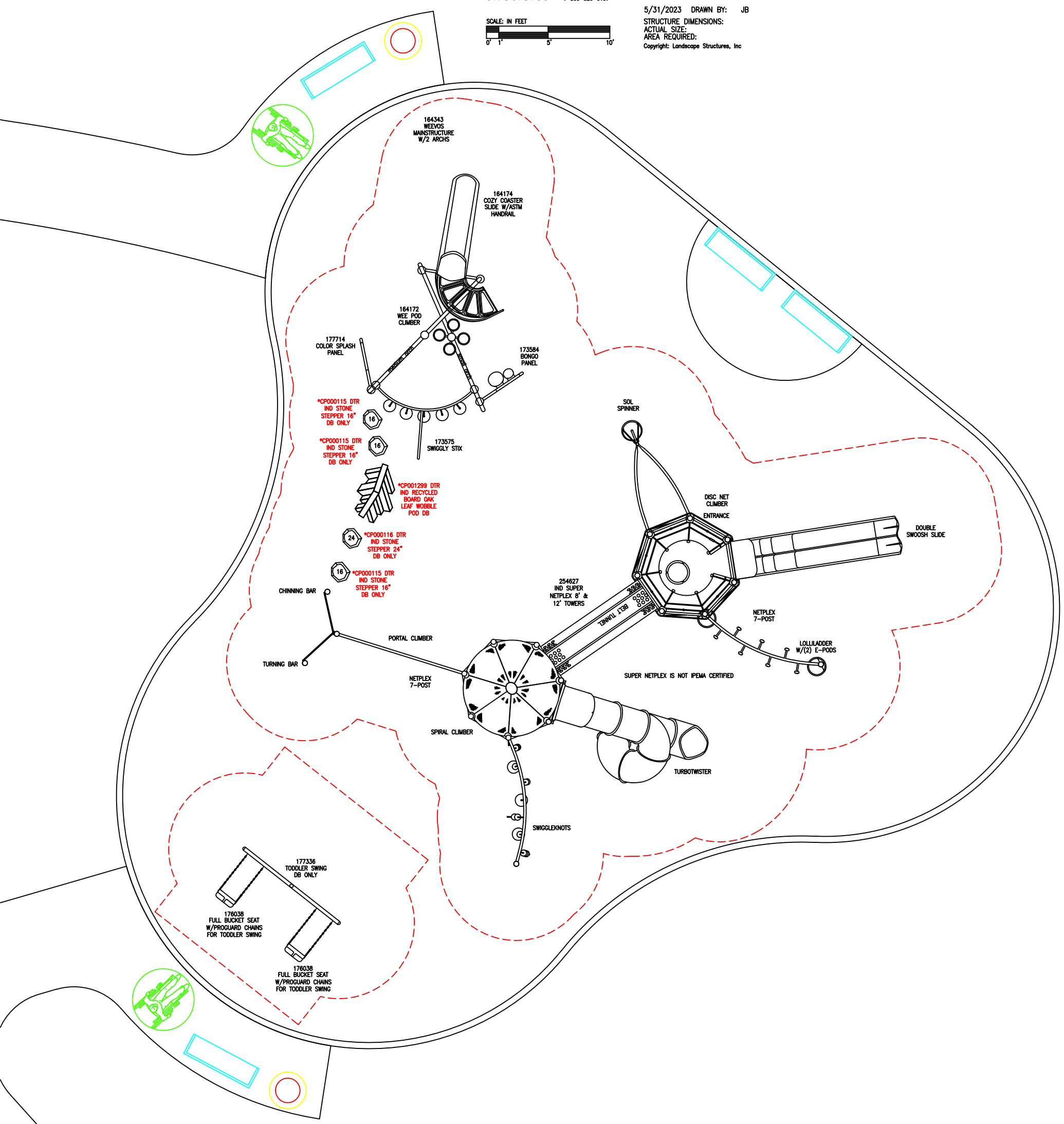
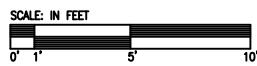

nUTOYS
Leisure Products

© 2023 Landscape Structures. All Rights Reserved



Townley Park
Kenilworth, IL
CODE: KNL23TOW1

5/31/2023 DRAWN BY: JB
STRUCTURE DIMENSIONS:
ACTUAL SIZE:
AREA REQUIRED:
Copyright: Landscape Structures, Inc





Box 7075
 Westchester, IL 60154
 708-579-9055
 708-579-0109 (fax)
 1-800-526-6197

July 21, 2023

Townley Park
 Kenilworth, IL
 OPTION 1
 PlayBooster/Weevos

<u>QTY.</u>	<u>NO.</u>	<u>DESCRIPTION</u>	<u>UNIT PRICE</u>	<u>PRICE</u>
2 to 5 Play Equipment				
1	173575A	Swiggly Stix Bridge DB ¹		\$ 6,080
1	164172A	Wee Pod Climber DB		1,650
1	164343A	Weevos 2 Arch Mainstructure DB Only ¹		2,755
1	173584A	Bongo Panel DB		2,625
1	177714A	Color Splash Panel DB		4,340
1	164174A	Cozy Coaster Slide w/ASTM Handrail DB w/Stairs Under Medium Arch		8,480
1	182503A	Welcome Sign (LSI Provided) Ages 2-5 years Direct Bury		-
SUBTOTAL				\$ 25,930
5 to 12 Play Equipment				
1	254627A	Super Netplex 8' & 12' Towers		\$ 171,635
	includes:	96" Double Swoosh Slide		
		Disc Net Climber		
		Lolliladder		
		Sol Spinner		
		Belt Tunnel		
		Turbotwister Slide		
		Swiggleknots Bridge		
		Spiral Climber		
		Portal Climber		
		Chinning Bar		
		Turning Bar		
1	CP001299A	DTR IND Recycled Board Oak Leaf Wobble Pod DB		4,270
3	CP000115A	DTR IND Stone Stepper 16"	\$ 1,200	3,600
1	CP000116A	DTR IND Stone Stepper 24"		1,665
SUBTOTAL				\$ 181,170
2-Place Toddler Swingset				
2	176038G	Full Bucket Seat ProGuard Chains for Toddler Swing	\$ 440	\$ 880
1	177336A	Toddler Swing Frame DB Only		1,405
SUBTOTAL				\$ 2,285
EQUIPMENT TOTAL				\$ 209,385
DISCOUNT - 8%				\$ (16,751)
SHIPPING				\$ 7,443
TOTAL				\$ 200,077

Surface America
PlayBound Poured in Place

Combination 1-3/4" thick (1015 SF), 3" thick (533 SF) and 5-1/2" thick (2095 SF)
(Thicknesses are subject to a nominal variation) system with top surface in 50% color /
50% black speckled mix. Includes standard aromatic. Includes freight.

3,643 Sq. Ft.

Poured-in-Place

\$ 86,244

Notes:

- * 1-3/4" thick poured-in-place system meets 4' critical fall height.
- * 3" thick poured-in-place system meets 6' and 7' critical fall height.
- * 5-1/2" thick poured-in-place system meets 12' critical fall height.
- * Thicknesses quoted to meet industry standards for ASTM testing of 1000 HIC/ 200 Gmax. This quote is for material and installation of the play surface only as described on the quote and does not include any ancillary work required such as sub base, security, drainage, removal of any existing surface, testing, etc. That would be done by others at no cost to Surface America.
- * Surface America poured-in-place system is IPEMA certified.
- * Union wages included.
- * Quote does not include security that is needed to protect the surfacing during curing time. Purchaser shall be responsible for security, as needed, to prevent vandalism and/or damage of any type to the surface during installation process, curing time, and after the installation is completed.
- * With Certain EPDM rubber colors, Surface America recommends aliphatic (non-yellowing) binder be considered, however this is an additional charge. Adding aliphatic binder will carry a 10-year warranty.
- * Surface America recommends the following colors be used as accent colors only: Teal, Yellow, Purple and Primary Red. If one of the listed colors is selected for more than 25% of the top surface, additional charges may need to be added.
- * Due to the volatile urethane pricing in the industry, the price quoted is only valid 30 days from the day the quote was provided.