

We have achieved a lot for our community while continuing to honor our community's commitment to fiscal responsibility.

But while we are doing everything we can to serve our community members, we continue to fall short and our residents deserve better.



Townley Field is a wonderful asset, but it needs investment. We have started at the south end and with grant support we are constructing a new playground, sport court, small shelter, and other amenities that will be available this fall.



We also need to improve North Townley Field by replacing a very tired Village House with a new recreation center to host many of the indoor and outdoor recreational services the community desires, especially during inclement weather and the cold winter/wet spring months.



KENILWORTH PARK DISTRICT



This election we have the opportunity to build an

EVEN STRONGER COMMUNITY

where people of all ages could create memories that last a lifetime.

WE CONTINUE TO FALL SHORT ON OUR RECREATIONAL CAPABILITIES AND OFFERINGS

so the Park District has been collaborating with the community on a plan to provide the amenities and top-notch facilities Kenilworth residents deserve.

This community-driven plan will appear on our ballots for approval in the upcoming November 5th election.

IF SUCCESSFUL, IT WOULD SUPPORT THE DEVELOPMENT OF:

- ✓ New, Safer Green Bay Bike Trail
- ✓ New Recreation Center to Provide Year-Round Programming for All Ages
- ✓ Ongoing Improvements to the Outdoor Recreational Spaces on Townley Field

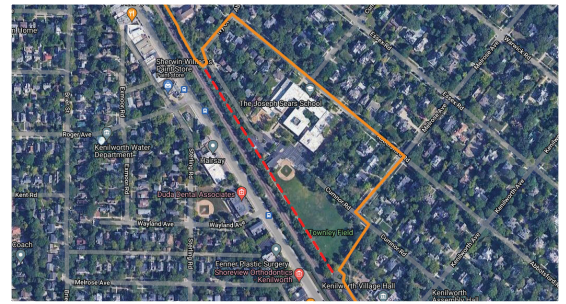
This community-driven plan will provide the

AMENITIES AND FACILITIES WE DESERVE!

If successful this election, the referendum will allow funding to:

Improve the Green Bay Bike Trail

The plan connects the trail between Winnetka and Wilmette through the west side of Townley Field, mitigating safety concerns caused by bicyclists navigating through streets and the school blacktop, and reducing the risk of accidents.



Build a New Recreation Center, Replacing the Village House

The plan would build a modern, larger, more energy efficient facility that supports all-age programs year-round and during inclement weather. This will include a basketball gym, indoor multipurpose spaces for all-age programs, and an option for an outdoor terrace.



Make Needed Improvements to Townley Field

Improvements include adding new indoor and outdoor ADA accessible restroom facilities, upgrading to new natural grass and a commercial irrigation system, and replacing current lighting with energy efficient LED lights.



LEARN MORE ABOUT THIS COMMUNITY-DRIVEN PLAN AT KENILWORTHPARKDISTRICT.ORG.